

## SIGMA EXTENS : extension module

The **SIGMA EXTENS** can extend the SIGMA MOD optional card capacity by 4 units (total of 8 optional cards).



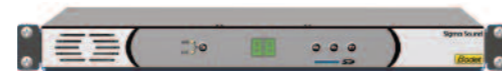
## SIGMA SWITCH : changeover module

The **SIGMA SWITCH** controls the alarm output of the main master clock. In case of failure, the SIGMA SWITCH sends all outputs from the main to the secondary master clock.



## SIGMA SOUND: Tone generator

The **SIGMA SOUND** module allows to broadcast audio messages or melodies through an existing PA system. Aux output, SD card reader, 16 pre-recorded melodies.



## Power supply units:

### **SIGMA UPS rack**

Uninterruptible power supply  
24V DC - 5Ah battery with charger  
Rack 3U - 9Kg



### **SIGMA UPS wall**

Uninterruptible power supply  
24V DC -  
5Ah battery with charger  
Wall mounted - 8 Kg

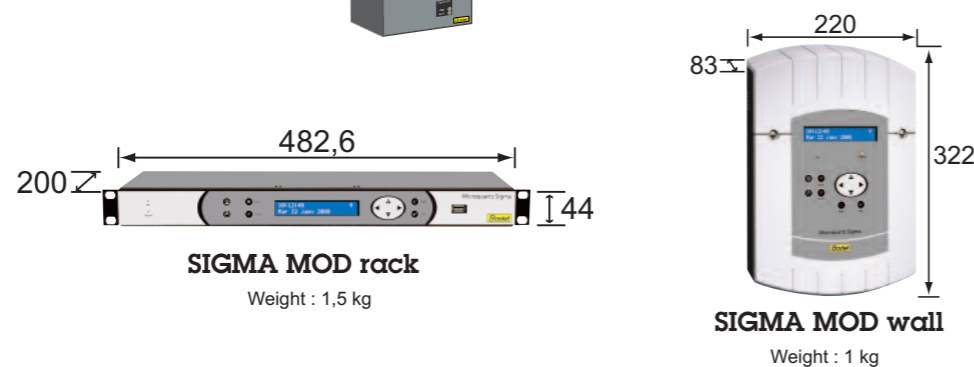


### **SIGMA POWER Rack**

External power supply  
110/230V 24VDC  
2 x 100W - 2 kg



## Dimensions in mm



## Technical features

- 1 Ethernet port 10/100 Base-T on RJ-45 connector.
- 3 relays for D1D2 impulses, alarms or circuit programming.
- 1 dry contact input.
- Automatic detection of synchro failure with switch over on the other synchro inputs NTP , AFNOR , GPS , radio
- 1 AFNOR output , 1 output for DHF transmitter
- 1 impulse output 24V minute or second 0.5A
- Power: 110/230V or TBT 24V or TBT 36/72V (rack).
- Time base accuracy:  $\pm 0.1$  s/day typical (1 ppm); temperature compensated quartz oscillator (TCXO).
- Absolute accuracy with GPS:  $\pm 5$  ms.
- Integrated protection of the outputs against short-circuits and overloads.
- Permanent saving of settings.



## Time Centre NTP Client/Server



B.P. 1  
49340 Trémentines  
FRANCE

Tel + 33 2 41 71 72 00  
Fax +33 2 41 71 72 02  
www.bodet.com

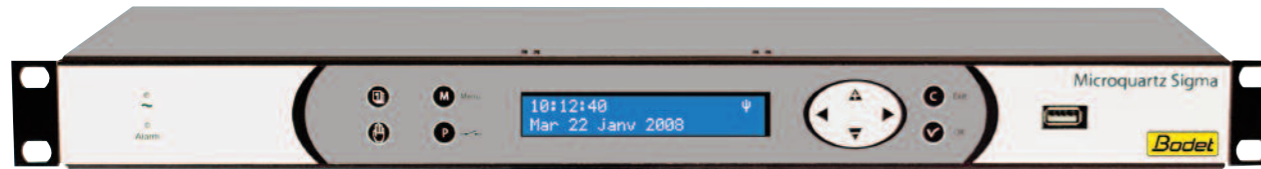


REF : 653311 C/0112



The SIGMA MOD is a time centre which combines in a single device the features of a NTP server and a master clock. It supplies a reliable and precise time reference to computers, clocks and automatic devices of the company.

## SIGMA MOD



Programming and configuration by PC software and transfer via Ethernet network or USB key.

### Synchronisation

- NTP (client),
- Radio FI 162 or DCF 77,
- GPS,
- AFNOR.

### Time distribution:

- 24 V impulse (mn, 1/2mn or sec),
- AFNOR,
- DHF,
- D1D2 230V (tower clock).

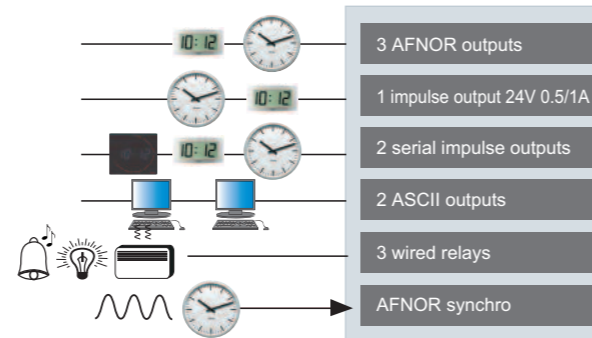
### Programming:

- wired relay
- wireless relay
- wireless sounder

### Peripherals:

- wireless transmitter
- wireless relay
- wireless sounder
- wireless analogue or digital clocks

The SIGMA MOD accepts 4 optional cards among:



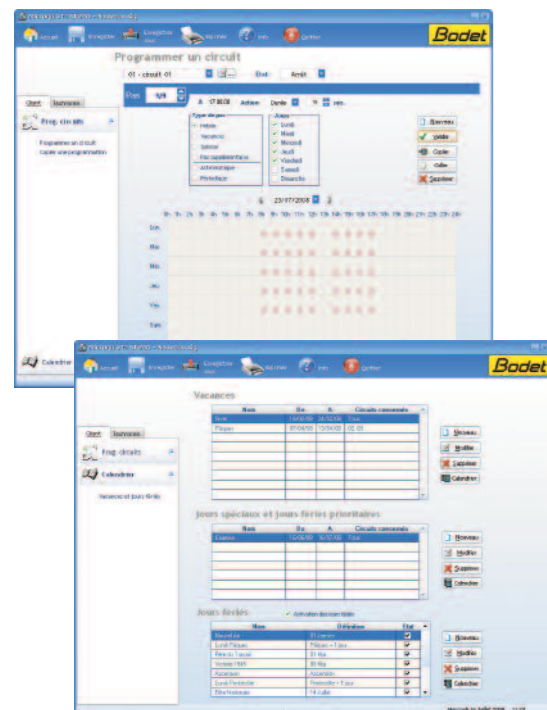
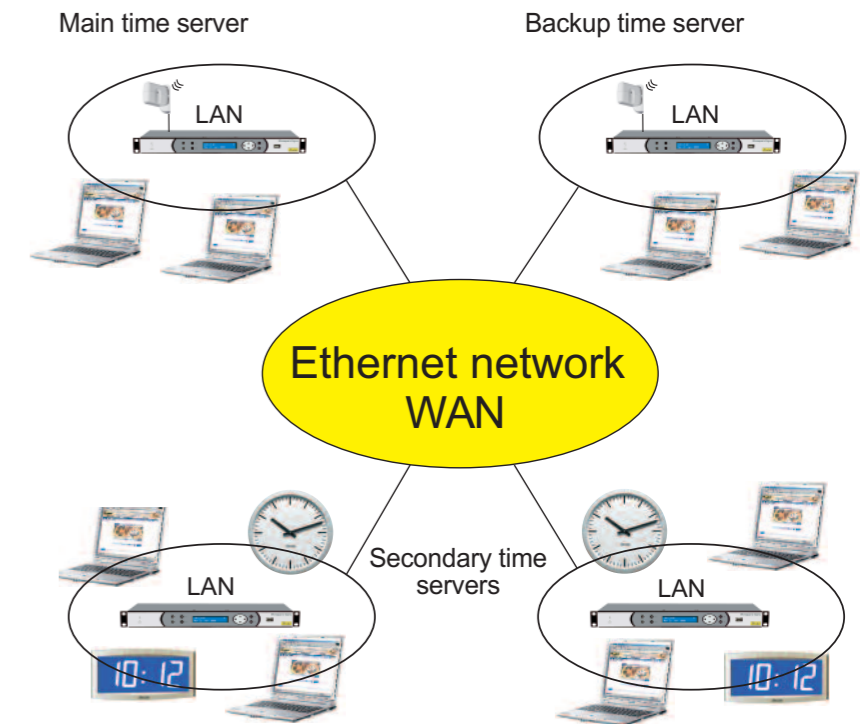
\*(2 cards for SIGMA MOD wall)

### Main benefits

- The SIGMA MOD is an upgradeable product including a NTP time server and a master clock.
- NTP client and/or server in broadcast, multicast or unicast mode.
- Wireless (DHF) and wired time distribution.
- Programming and setting via Windows PC over the LAN.
- Time synchronisation with automatic switching between radio and NTP inputs.
- Circuit programming in various modes: weekly, bank day, holidays, special day, astronomic or periodic.
- Circuit controlled through wireless or wired connection.
- Modularity: optional cards can be added.

### Alarm management :

- Dry contact for visual or audible alarm annunciation.
- SNMP traps
- E-mail to 3 addresses



### Programming software

- All functions and programming accessible from a PC.
- **ON LINE mode** to communicate with the time centre in real time via IP.
- Programming backup or transfer by computer file.

### Simple and user friendly interface

- programming, manual or automatic activation of the relays.
- Programming of holidays, special day periods, time outputs and summer/winter changeover.
- Management and display of alarms.

